

# PLAN YOUR VISIT

## Visiting Hours and Holidays

|                    |              |
|--------------------|--------------|
| Monday to Saturday | 10 am - 5 pm |
| Thursday           | 10 am - 8 pm |
| Sunday             | 12 pm - 5 pm |

## General Admission\*

|   |      |
|---|------|
| Tax included  |      |
| Friends of the BSM  | free |
| General Admission   | \$14 |
| Seniors (65+)   | \$12 |
| Students (with ID)  | \$8  |
| Children (5 - 17)   | \$5  |
| Children under 5  | free |
| Family Pass 1<br>(1 adult and up to 4 children under 18)  | \$24 |
| Family Pass 2<br>(2 adults and up to 4 children under 18) | \$35 |

PayWhatYouCan  
every Thursday 5 - 8 pm

Different prices during March Break.  
Special activities may be separately priced.

\*admission pricing subject to change

## Phone Numbers

|  |                   |
|--|-------------------|
| General Information<br><a href="mailto:info@batashoemuseum.ca">info@batashoemuseum.ca</a>              | 416.979.7799      |
| Group Tour Bookings<br><a href="mailto:education@batashoemuseum.ca">education@batashoemuseum.ca</a>    | 416.979.7799 x242 |
| Friends of the BSM Program<br><a href="mailto:friends@batashoemuseum.ca">friends@batashoemuseum.ca</a> | 416.979.7799 x250 |

## Accessibility

The Bata Shoe Museum is a fully accessible facility. A wheel chair is available on a first-come, first-served basis. For more information, please call 416.979.7799.

## Support Persons/Service Animals

A support person accompanying a visitor with disabilities will be admitted to the museum free of charge. A service animal may also accompany a visitor to all public areas of the museum. For more information, please call 416.979.7799.

## Directions

The Bata Shoe Museum is located at 327 Bloor Street West in the heart of downtown Toronto.

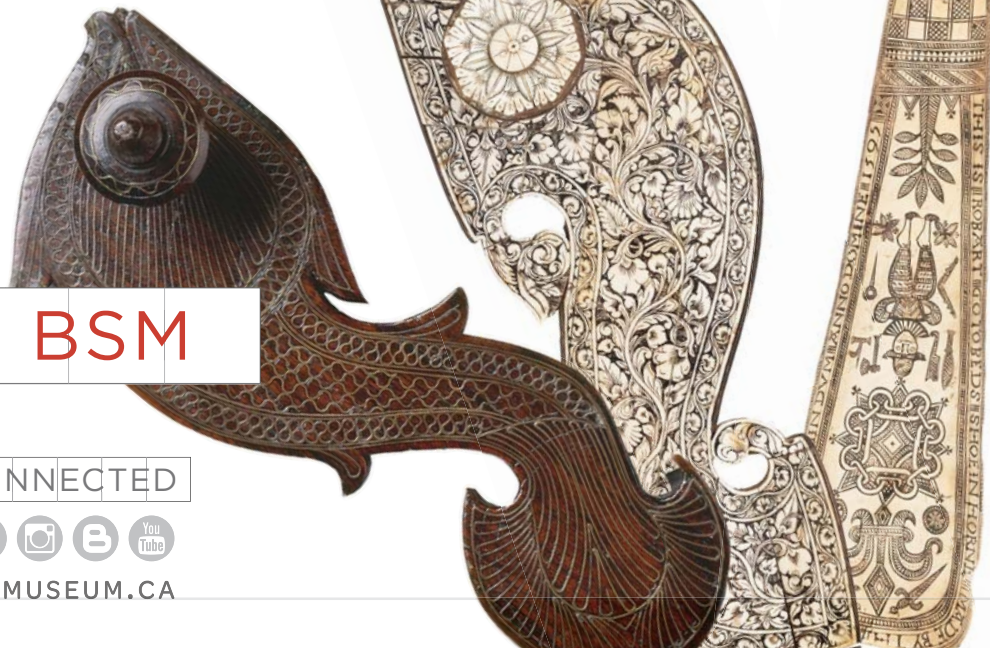
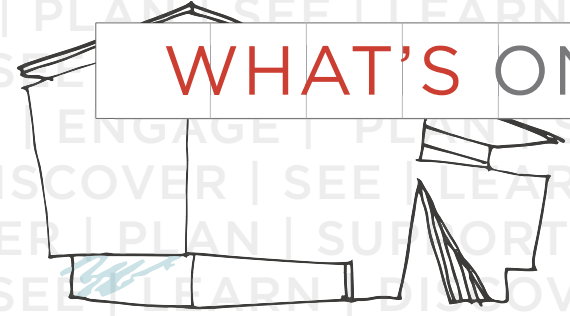
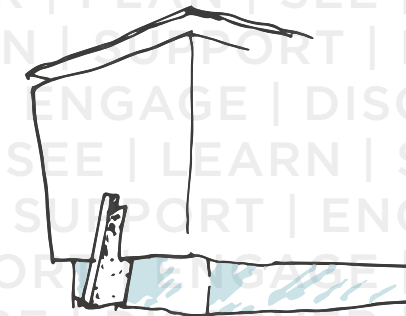
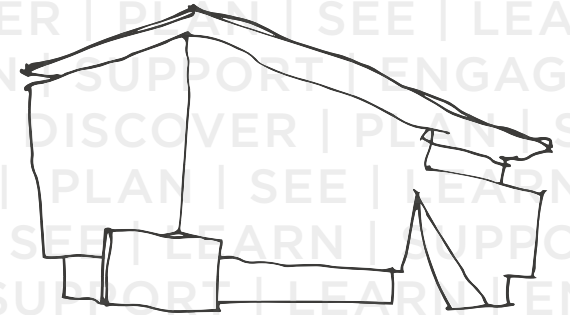
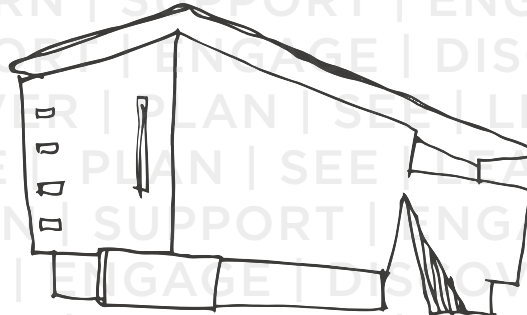
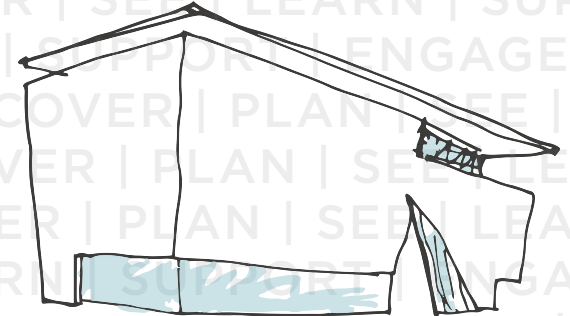
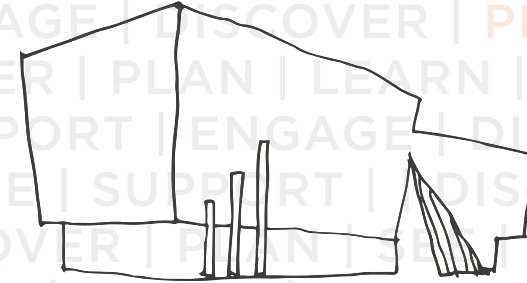
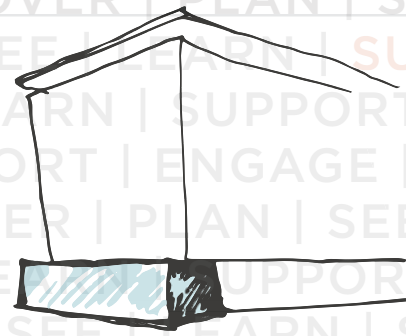
### By subway

From St. George subway station, walk to the southwest corner of Bloor Street West and St. George.

### Parking Possibilities

Holiday Inn Toronto Bloor Yorkville  
(on Bloor Street, across from the museum)  
9 Bedford Road  
(north of Bloor Street, east of St. George)  
465 Huron Street  
(north of Bloor Street, west of St. George)

# BATA SHOE MUSEUM



Line drawings courtesy of Moriyama Fonds, Ontario Archives

## AT THE BSM

STAY CONNECTED



BATASHOEMUSEUM.CA

## WHAT'S ON



NOW ON VIEW

# ABOUT THE BSM

The Bata Shoe Museum is the life project of a determined and passionate collector with a keen eye for footwear. **Sonja Bata** has searched the globe for unusual shoes for decades, resulting in a spectacularly diverse collection found nowhere else in the world.

The **shoebox-shaped building** designed by world renowned architect Raymond Moriyama and located in the heart of downtown Toronto, welcomes you with its distinctive contemporary architecture, spacious and light-filled.

Three changing exhibitions and one semi-permanent exhibition mean **there is always something new to explore**, while lectures, performances, special events and family programs enhance your experience and visit.

Stepping into one of the museum's enchanting galleries is like entering another world, one where the craftsmanship and creativity of the footwear is complemented and put into context by a specially created environment.

The objects in the museum span **thousands of years, six continents and many walks of life**. Footwear is presented as a key to understanding cultures. Revealing attitudes to childhood, marriage, work, leisure, beliefs, social life and so much more, a visit to the museum will enhance your appreciation of human ingenuity and captivate your imagination.

**For every shoe there's a story.** Discover thousands at the Bata Shoe Museum.

## **Standing Tall: The Curious History of Men in Heels** **Now on view**

Challenge your preconceived notions of who wears heels and why. From privileged rulers to hyper-sexualized rock stars, explore the history of men in heels from the early 1600s to today. Offering rare examples of men's heeled footwear from the seventeenth and eighteenth centuries, mid-nineteenth century military boots, 1930s cowboy boots and 1940s biker boots, visitors can also see John Lennon's original 1960s Beatle boot and platforms worn by Elton John in the 1970s, all from the museum's own holdings.

## **Art & Innovation: Traditional Arctic Footwear from the Bata Shoe Museum Collection** **Now on view**

At the top of the world, spanning over fourteen million square kilometers and eight countries, the Arctic landscapes may seem harsh and inhospitable yet the region is home to over forty distinct cultural groups. These people have thrived for centuries by creating beautiful and diverse solutions that both embrace the unique opportunities provided by the Arctic as well as to meet its many challenges. In particular, the footwear and clothing created by Arctic women attests to this history of innovation. The incredible range of circumpolar attire includes

inventive technologies that ensure comfort to intricate decorative techniques used to communicate cultural identity. Drawing from information and artifacts gathered during the Bata Shoe Museum Foundation funded Arctic research trips taken between the 1970s and early 1990s, this exhibition offers highlights from the museum's collection and celebrates the beauty and diversity of traditional Arctic attire.

## **Fashion Victims: The Pleasures and Perils of Dress in the 19<sup>th</sup> Century** **Now on view**

Transport yourself back to the 19<sup>th</sup> century where fashion-forward women graced the boulevards and ballrooms with their colourful presence. Their tailored male companions cut equally refined figures in their black coats, spotless white linens, lustrous top hats and shiny boots. Yet presenting an elegant exterior was not without its perils. The discomfort of constricting corsets and impossibly narrow footwear was matched by the dangers of wearing articles of fashion dyed with poison-laced colours and made of highly flammable materials. From the challenges faced by those who produced fashionable dress to the risks taken by those who wore it, this exhibition provides thought-provoking insights into what it means to be a fashion victim.

## **All About Shoes: Footwear Through the Ages** **Semi-permanent exhibition**

Take a fascinating journey and experience the many facets of footwear - its evolution and symbolism through the ages - the methods and materials of its manufacture - its place in our lives and imaginations. This semi-permanent exhibition also features a look at the development of 20<sup>th</sup> century fashion footwear by the decade. Finishing off the display is *Star Turns*, a celebrity shoe area highlighting some of the world's most celebrated people.

## **Shining Stars: Celebrating Canada's Walk of Fame** **Now on view in Star Turns**

As the country celebrates the 150<sup>th</sup> anniversary of Canadian Confederation this year, the Bata Shoe Museum and Canada's Walk of Fame have teamed up to mark this important milestone with a special exhibition showcasing the footwear of notable Canadian inductees who have contributed to our national culture in the fields of arts, literature, athletics, science, politics and entertainment. Get up close and personal with shoes worn by Gordon Lightfoot, Margaret Atwood, Roberta Bondar and many others. Recognized for their talents and achievements, be inspired by their stories, accomplishments and impact on the world stage.

*In partnership with:*

